

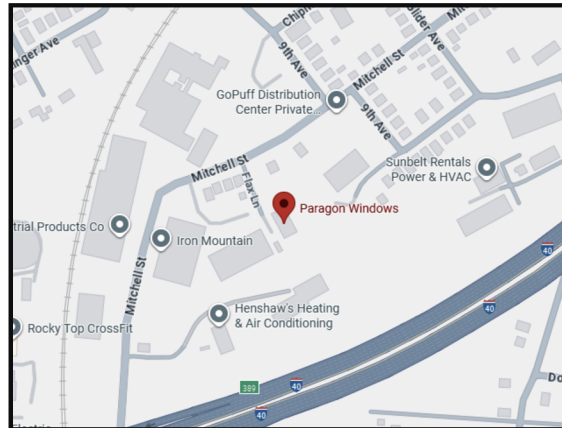
## ABOUT US

**Paragon Windows LLC** is a trusted GEALAN-certified manufacturer located in Knoxville, Tennessee. As a leading producer of high-quality uPVC windows and doors, we take pride in blending German engineering with American craftsmanship to deliver exceptional products for your home or business.

Our premium uPVC profiles are imported directly from Germany, while every window and door is proudly manufactured in the USA. This unique combination of world-class materials and advanced European technology ensures superior durability, energy efficiency, and aesthetic appeal in every product we create.

## CONTACT US

- 📞 **865-705-5875**
- ✉️ [paragonwindowsllc@gmail.com](mailto:paragonwindowsllc@gmail.com)
- 📍 1520 Mitchell St, Knoxville, TN 37917



[www.ParagonWindowsLLC.com](http://www.ParagonWindowsLLC.com)



## OUR MISSION

Our mission is to enhance everyday living through beautifully engineered windows and doors that deliver lasting comfort, efficiency, and style. We're committed to setting a new standard of quality and performance for every home we serve.



## FOLLOW US ON



INSTAGRAM



FACEBOOK



PREMIUM EUROPEAN  
WINDOWS & DOORS



Windows that Meet the Highest Expectations





## Why Homeowners Love Tilt & Turn Windows



### ENERGY EFFICIENCY

Advanced insulation & airtight seals lower heating and cooling costs.



### YEAR-ROUND COMFORT

Keeps your home cool in summer and warm in the winter.



### NOISE REDUCTION

Airtight seals + multi-point locks reduce outside noise.



### EASY TO CLEAN

Swing inward for safe, hassle-free cleaning – no ladders required.



### OPTIMAL SEALS

Superior seals stop air & water leaks for lasting comfort.



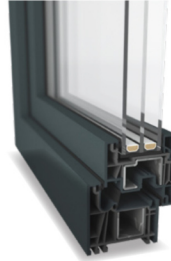
### ENHANCED SECURITY

Multi-point locking system for strong protection and fresh-air ventilation.

## LINEAR

**Modern.  
Sleek.  
High-Performance.**

### WINDOW



IGU Thickness: From 0.8" to 2.0"  
U-Factor: 0.25-0.14 Btu/h-ft<sup>2</sup>°F\*  
Max Height: Up to 11' 6"  
Max Width: Up to 11' 6"

### DOOR



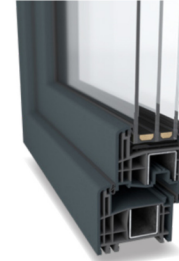
IGU Thickness: From 0.8" to 2.0"  
U-Factor: 0.25-0.14 Btu/h-ft<sup>2</sup>°F\*  
Max Height: Up to 7' 8"  
Max Width: Up to 3' 10"

- ✓ Contemporary Design  
Sharp lines and a minimalist profile for a modern aesthetic.
- ✓ Advanced Energy Efficiency  
Multi-chamber system and 74 mm depth for top insulation.
- ✓ Durable Surface with acrycolor®  
Long-lasting, scratch-resistant color technology.
- ✓ Innovative Technology  
Compatible with GEALAN STV® (Static Dry Glazing) and more.
- ✓ Ideal for Modern Architecture  
Perfect for stylish, design-focused homes and buildings.

## S 8000

**Classic.  
Reliable.  
Cost-Effective.**

### WINDOW



IGU Thickness: From 0.8" to 2.0"  
U-Factor: 0.27 - 0.16 Btu/h-ft<sup>2</sup>°F\*  
Max Height: Up to 11' 6"  
Max Width: Up to 11' 6"

### DOOR



IGU Thickness: From 0.8" to 2.0"  
U-Factor: 0.27 - 0.16 Btu/h-ft<sup>2</sup>°F\*  
Max Height: Up to 7' 8"  
Max Width: Up to 3' 10"

- ✓ Traditional Design  
Smooth, rounded edges for a timeless look.
- ✓ Solid Thermal Performance  
6-chamber profile provides dependable energy efficiency.
- ✓ Strong and Stable  
Large reinforcement chamber for structural reliability.
- ✓ Affordable Solution  
Ideal for projects with budget-conscious goals.
- ✓ Flexible Installation  
Designed for easy integration in residential builds.

## ENTRY & SLIDING DOORS

### ✓ Enhanced Security

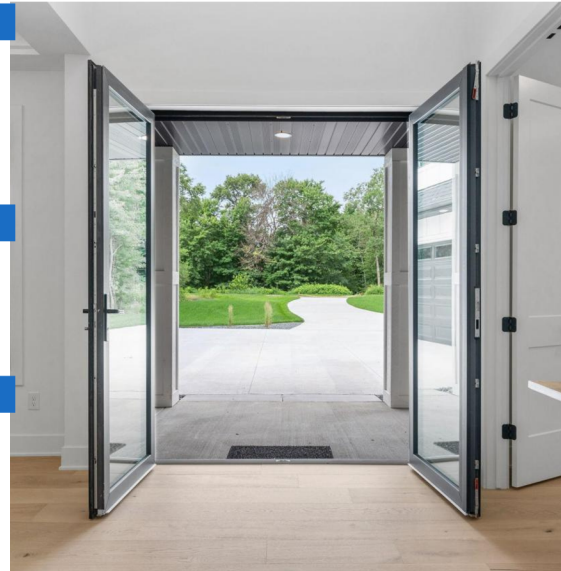
European entrance doors are engineered for security, featuring solid core construction, reinforced frames, and multi-point locking systems to protect your home and family.

### ✓ Outstanding Energy Efficiency

Designed for superior insulation and energy savings, these doors minimize drafts and reduce heating and cooling costs.

### ✓ Exceptional Design Flexibility

Express your style with versatile design options, including modern or traditional looks, customizable colors, finishes, glass, and hardware.



### ✓ Effortless Glide

Our advanced roller system ensures even large, heavy doors slide open and close with ease, providing seamless operation.

### ✓ Exceptional Durability

Built to withstand harsh weather, the GEALAN-SMOOVIO system features strong profiles and weather-resistant materials for reliable performance in any climate.

### ✓ Thermal Intelligence Built-In

With outstanding U-values and gapless circumferential sealing, the system keeps warmth where it belongs - inside - for year round energy efficiency.